

# LATA

FERRO E AÇO



**CATÁLOGO DE PRODUTOS 2021**

# **SOBRE NÓS**

---

Fundada no dia 12 de abril de 2018, a Lata Aços Indústria e Comércio LTDA está situada na cidade de São Marcos, no RS. A empresa preza pela eficiência e pela agilidade na fabricação de autopeças para implementos rodoviários, se destacando pela qualidade desde a obtenção da matéria-prima até o produto final.

## **Missão**

Fabricar peças de excelente qualidade, com rapidez, agilidade e um bom atendimento, sempre buscando ser referência em seu ramo de atuação.

## **Visão**

Ser reconhecida e prestigiada no setor de fabricação de autopeças.

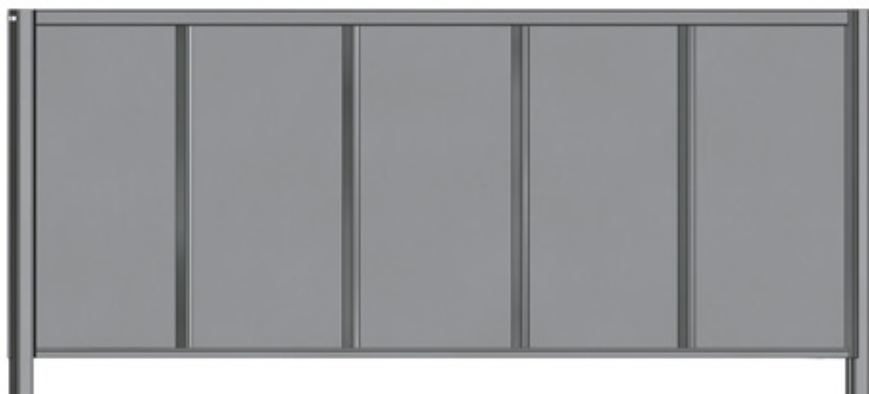
## **Valores**

- Responsabilidade e comprometimento com seus clientes e colaboradores;
- Busca contínua pela inovação e pela qualidade em todo o processo produtivo;
- Compromisso em todas as suas parcerias;
- Honestidade e respeito nas relações com clientes, fornecedores, representantes e colaboradores.

# ÍNDICE

<b>LINHA RANDON .....</b>	<b>04</b>
CAIXAS DE FERRAMENTAS .....	<b>17</b>
<b>LINHA GUERRA .....</b>	<b>21</b>
CAIXAS DE FERRAMENTAS .....	<b>32</b>
<b>LINHA NOMA .....</b>	<b>36</b>
<b>LINHA LIBRELATO .....</b>	<b>44</b>
<b>LINHA FACCHINI .....</b>	<b>49</b>
<b>DIVERSOS .....</b>	<b>51</b>
CAIXAS DE FERRAMENTAS .....	<b>52</b>
<b>LINHA DE PEÇAS PLÁSTICAS .....</b>	<b>59</b>

## FRONTAIS MODELO ANTIGO



### CR110

#### FRONTAL INFERIOR MODELO ANTIGO

- CR110A 550 mm
- CR110B 600 mm
- CR110C 650 mm
- CR110D 700 mm
- CR110E 800 mm
- CR110F 1000 mm



### CR111

#### FRONTAL SUPERIOR MODELO ANTIGO

- CR111A 550 mm
- CR111B 600 mm
- CR111C 650 mm
- CR111D 700 mm
- CR111E 800 mm
- CR111F 1000 mm

## FUEIROS MODELO ANTIGO



**CR121**

**FUEIRO LATERAL  
INFERIOR  
MODELO ANTIGO**

CR121A 550 mm  
CR121B 600 mm  
CR121C 650 mm  
CR121D 700 mm  
CR121E 800 mm  
CR121F 1000 mm



**CR122**

**FUEIRO LATERAL  
SUPERIOR  
MODELO ANTIGO**

CR122A 550 mm  
CR122B 600 mm  
CR122C 650 mm  
CR122D 700 mm  
CR122E 800 mm  
CR122F 1000 mm



**CR123**

**FUEIRO CANTO INFERIOR  
LE MODELO ANTIGO**

CR123A 550 mm  
CR123B 600 mm  
CR123C 650 mm  
CR123D 700 mm  
CR123E 800 mm  
CR123F 1000 mm



**CR124**

**FUEIRO CANTO INFERIOR  
LD MODELO ANTIGO**

CR124A 550 mm  
CR124B 600 mm  
CR124C 650 mm  
CR124D 700 mm  
CR124E 800 mm  
CR124F 1000 mm



**CR125**

**FUEIRO CANTO SUPERIOR  
LE MODELO ANTIGO**

CR125A 550 mm  
CR125B 600 mm  
CR125C 650 mm  
CR125D 700 mm  
CR125E 800 mm  
CR125F 1000 mm

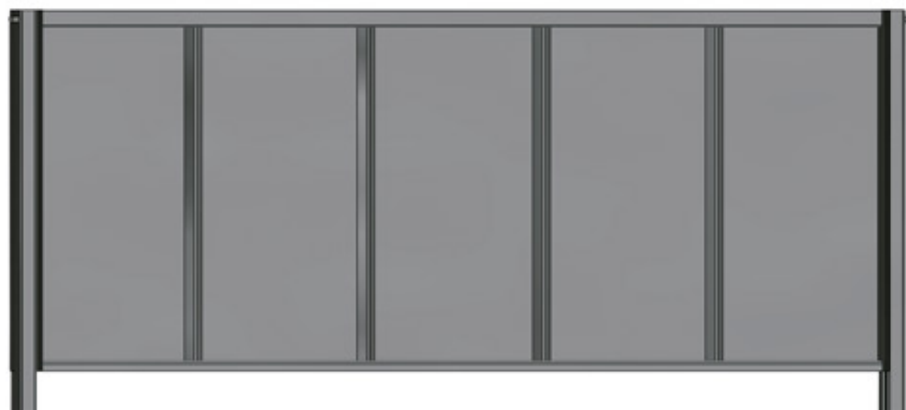


**CR126**

**FUEIRO CANTO SUPERIOR  
LD MODELO ANTIGO**

CR126A 550 mm  
CR126B 600 mm  
CR126C 650 mm  
CR126D 700 mm  
CR126E 800 mm  
CR126F 1000 mm

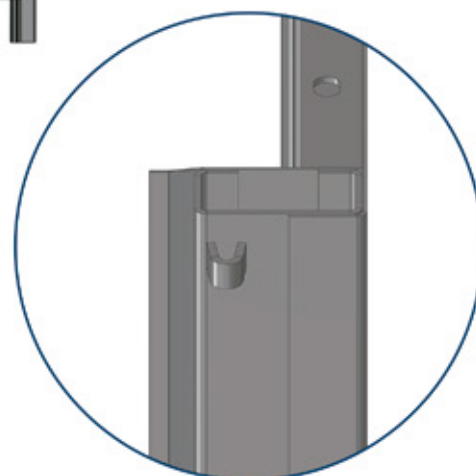
## FRONTAIS MODELO 2008



### CR160

#### FRONTAL INFERIOR MODELO 2008

CR160A	550 mm
CR160B	600 mm
CR160C	650 mm
CR160D	700 mm
CR160E	800 mm
CR160F	1000 mm



### CR161

#### FRONTAL SUPERIOR MODELO 2008

CR161A	550 mm
CR161B	600 mm
CR161C	650 mm
CR161D	700 mm
CR161E	800 mm
CR161F	1000 mm

## FUEIROS MODELO 2008



### CR162

#### FUEIRO LATERAL INFERIOR MODELO 2008

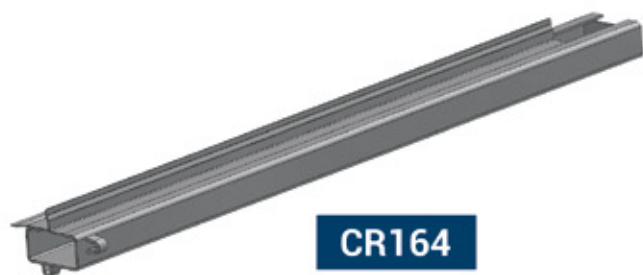
CR162A 550 mm  
CR162B 600 mm  
CR162C 650 mm  
CR162D 700 mm  
CR162E 800 mm  
CR162F 1000 mm



### CR163

#### FUEIRO LATERAL SUPERIOR MODELO 2008

CR110A 550 mm  
CR110B 600 mm  
CR110C 650 mm  
CR110D 700 mm  
CR110E 800 mm  
CR110F 1000 mm



### CR164

#### FUEIRO CANTO INFERIOR LE MODELO 2008

CR164A 550 mm  
CR164B 600 mm  
CR164C 650 mm  
CR164D 700 mm  
CR164E 800 mm  
CR164F 1000 mm



### CR165

#### FUEIRO CANTO INFERIOR LD MODELO 2008

CR165A 550 mm  
CR165B 600 mm  
CR165C 650 mm  
CR165D 700 mm  
CR165E 800 mm  
CR165F 1000 mm



### CR166

#### FUEIRO CANTO SUPERIOR LE MODELO 2008

CR166A 550 mm  
CR166B 600 mm  
CR166C 650 mm  
CR166D 700 mm  
CR166E 800 mm  
CR166F 1000 mm



### CR167

#### FUEIRO CANTO SUPERIOR LD MODELO 2008

CR167A 550 mm  
CR167B 600 mm  
CR167C 650 mm  
CR167D 700 mm  
CR167E 800 mm  
CR167F 1000 mm

## FUEIROS MODELO LARGO



**CR260**

**FUEIRO LATERAL  
INFERIOR  
MODELO LARGO**

CR260A 550 mm  
CR260B 600 mm  
CR260C 650 mm  
CR260D 700 mm  
CR260E 800 mm  
CR260F 1000 mm



**CR261**

**FUEIRO LATERAL  
SUPERIOR  
MODELO LARGO**

CR261A 550 mm  
CR261B 600 mm  
CR261C 650 mm  
CR261D 700 mm  
CR261E 800 mm  
CR261F 1000 mm



**CR262**

**FUEIRO CANTO INFERIOR  
LD MODELO LARGO**

CR262A 550 mm  
CR262B 600 mm  
CR262C 650 mm  
CR262D 700 mm  
CR262E 800 mm  
CR262F 1000 mm



**CR263**

**FUEIRO CANTO INFERIOR  
LE MODELO LARGO**

CR263A 550 mm  
CR263B 600 mm  
CR263C 650 mm  
CR263D 700 mm  
CR263E 800 mm  
CR263F 1000 mm



**CR264**

**FUEIRO CANTO SUPERIOR  
LD MODELO LARGO**

CR264A 550 mm  
CR264B 600 mm  
CR264C 650 mm  
CR264D 700 mm  
CR264E 800 mm  
CR264F 1000 mm



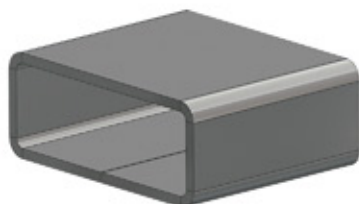
**CR265**

**FUEIRO CANTO SUPERIOR  
LE MODELO LARGO**

CR265A 550 mm  
CR265B 600 mm  
CR265C 650 mm  
CR265D 700 mm  
CR265E 800 mm  
CR265F 1000 mm



## CAIXAS DE FUEIRO



**CR041**

CAIXA FUEIRO LARGO



**CR040**

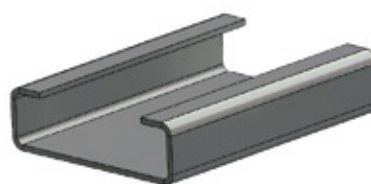
CAIXA FUEIRO

## ENCAIXES



**CR119**

ENCAIXE FUEIRO 95 mm



**CR219**

ENCAIXE FUEIRO 145 mm

## CORPO DO FUEIRO



**CR120**

CORPO DO FUEIRO 95 mm

CR120A 550 mm  
CR120B 600 mm  
CR120C 650 mm  
CR120D 670 mm  
CR120E 700 mm  
CR120F 720 mm  
CR120G 770 mm  
CR120H 800 mm  
CR120I 820 mm  
CR120J 920 mm  
CR120K 1000 mm  
CR120L 1120 mm  
CR120M 3000 mm

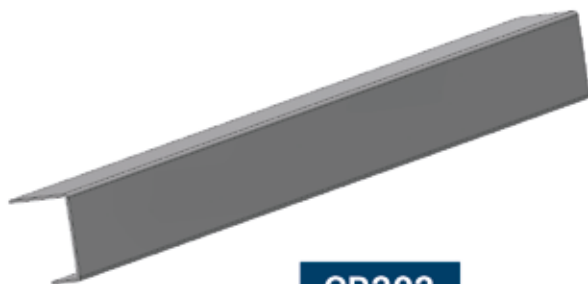


**CR129**

CORPO DO FUEIRO  
LARGO 145 mm

CR121A 550 mm  
CR121B 600 mm  
CR121C 650 mm  
CR121D 670 mm  
CR121E 700 mm  
CR121F 720 mm  
CR121G 770 mm  
CR121H 800 mm  
CR121I 820 mm  
CR121J 920 mm  
CR121K 1000 mm  
CR121L 1120 mm  
CR121M 3000 mm

## PERFIL



**CR202**

**PERFIL TRASEIRO  
2430 mm**

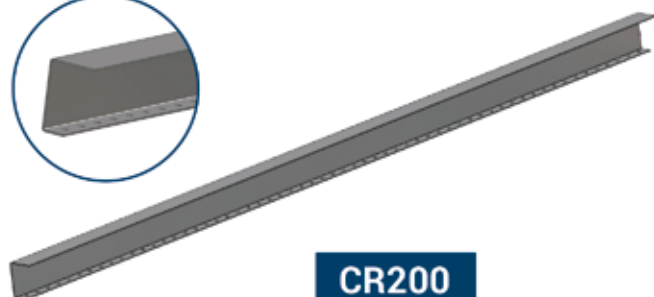
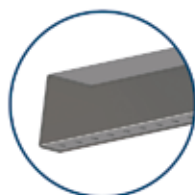
CR202A Chapa 4,25 mm  
CR202B Chapa 6,35 mm



**CR203**

**PERFIL DIANTEIRO**

## LATERAIS



**CR200**

**LATERAL COM FURAÇÃO**

CR200A 2970 mm  
CR200B 2430 mm  
CR200C 2330 mm  
CR200D 2230 mm

**CR201**

**LATERAL SEM FURAÇÃO**

CR201A 2970 mm  
CR201B 2430 mm  
CR201C 2330 mm  
CR201D 2230 mm

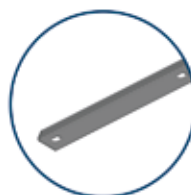
## CANTONEIRAS



**CR205A**

**CANTONEIRA ASSOALHO  
COM FURAÇÃO**

CR205A 2 mm  
CR206A 2,65 mm



**CR205B**

**CANTONEIRA ASSOALHO  
SEM FURAÇÃO**

CR205B 2 mm  
CR206B 2,65 mm

## UNIÃO PARA ASSOALHO

---



**CR235**

**UNIÃO ASSOALHO**

CR235A 18 mm

CR235B 20 mm

CR235C 22 mm

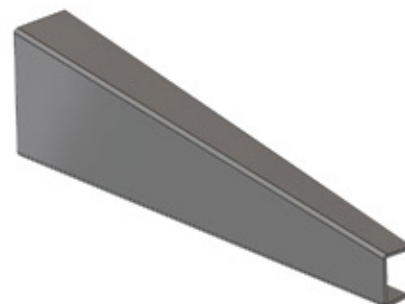
## MÃO FRANCESA

---



**CR220A**

**MÃO FRANCESA LE**



**CR220B**

**MÃO FRANCESA LD**

## CINTAS PARA-BARRO

---



**CR400**

CINTA PARA-BARRO  
640 mm



**CR401**

CINTA PARA-BARRO  
670 mm

## SUPORTE PLACA

---



**CR410**

SUPORTE PLACA

## SAIA CENTRAL

---



**CR415A**

SAIA CENTRAL 800 mm

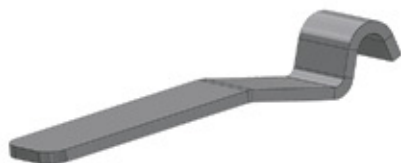


**CR415B**

SAIA CENTRAL 900 mm

## TOMBADOR

---



**CR214**

ALAVANCA TOMBADOR



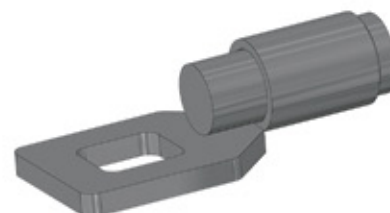
**CR215**

DESLIZANTE TOMBADOR



**CR216**

VARÃO TOMBADOR



**CR217**

ROLETE TOMBADOR



**CR705**

CONJUNTO TOMBADOR INFERIOR

## ENGATES



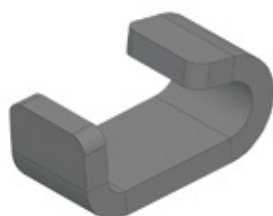
**CR150**

ENGATE FÊMEA INFERIOR



**CR151**

ENGATE FÊMEA SUPERIOR



**CR210**

ENGATE G



**CR213**

ENGATE J TOMBADOR



**CR250**

ARANHA ASSOALHO

## DOBRADIÇAS



**CR050**

DOBRADIÇA MODERNA



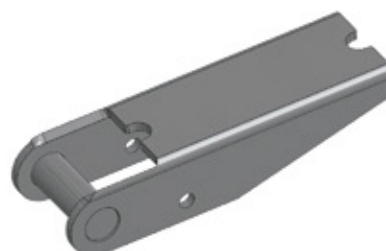
**CR051**

DOBRADIÇA ATÉ 2007



**CR052**

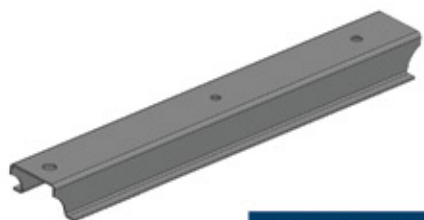
DOBRADIÇA TOMBADOR  
INFERIOR



**CR053**

DOBRADIÇA TOMBADOR  
SUPERIOR

## COLUNAS



### CR300A

#### COLUNA MODERNA

CR300A 430 mm  
CR300B 480 mm  
CR300C 530 mm  
CR300D 580 mm  
CR300E 680 mm  
CR300F 880 mm



### CR301A

#### COLUNA MODERNA MONTADA

CR301A 430 mm  
CR301B 480 mm  
CR301C 530 mm  
CR301D 580 mm  
CR301E 680 mm  
CR301F 880 mm



### CR310A

#### COLUNA ANTIGA INFERIOR

CR310A 450 mm  
CR310B 500 mm  
CR310C 550 mm  
CR310D 600 mm  
CR310E 700 mm  
CR310F 900 mm



### CR311A

#### COLUNA ANTIGA SUPERIOR

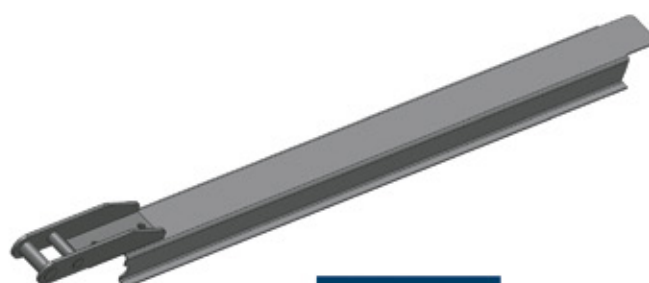
CR311A 450 mm  
CR311B 500 mm  
CR311C 550 mm  
CR311D 600 mm  
CR311E 700 mm  
CR311F 900 mm



### CR312A

#### COLUNA ANTIGA INFERIOR MONTADA

CR312A 450 mm  
CR312B 500 mm  
CR312C 550 mm  
CR312D 600 mm  
CR312E 700 mm  
CR312F 900 mm



### CR313A

#### COLUNA ANTIGA SUPERIOR MONTADA

CR313A 450 mm  
CR313B 500 mm  
CR313C 550 mm  
CR313D 600 mm  
CR313E 700 mm  
CR313F 900 mm

## VIGUETAS



### CR170A

#### VIGUETA INFERIOR

CR170A 2960 mm  
CR170B 2420 mm  
CR170C 2320 mm  
CR170D 2220 mm

#### SEM FURAÇÃO

CR171A 2960 mm  
CR171B 2420 mm  
CR171C 2320 mm  
CR171D 2220 mm



### CR180A

#### VIGUETA SUPERIOR TAMPA INFERIOR

CR180A 2960 mm  
CR180B 2420 mm  
CR180C 2320 mm  
CR180D 2220 mm

#### SEM FURAÇÃO

CR181A 2960 mm  
CR181B 2420 mm  
CR181C 2320 mm  
CR181D 2220 mm



### CR190A

#### VIGUETA SUPERIOR TAMPA SUPERIOR

CR190A 2970 mm  
CR190B 2430 mm  
CR190C 2330 mm  
CR190D 2230 mm

#### SEM FURAÇÃO

CR191A 2970 mm  
CR191B 2430 mm  
CR191C 2330 mm  
CR191D 2230 mm



### CR192A

#### VIGUETA SUPERIOR TRASEIRA 2430 mm



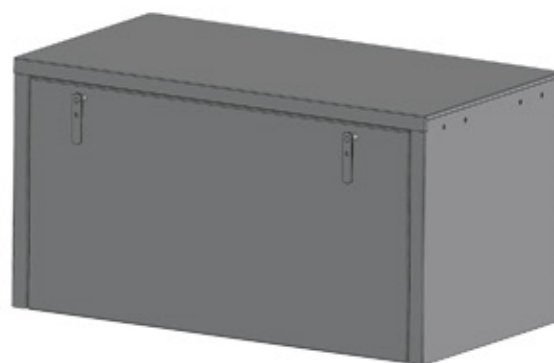
## CAIXAS DE FERRAMENTAS



**CR600**

CAIXA DE FERRAMENTAS

CÓD.	ALT.	LARG.	PROFUN.
CR600	600 mm	600 mm	600 mm

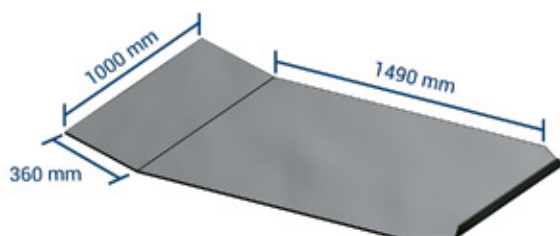


**CR601**

CAIXA DE FERRAMENTAS

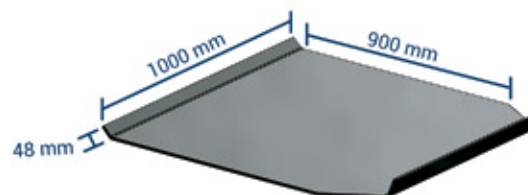
CÓD.	ALT.	LARG.	PROFUN.
CR601	600 mm	1140 mm	600 mm
CR602	600 mm	1100 mm	600 mm
CR603	600 mm	1000 mm	600 mm

## MESA PINO



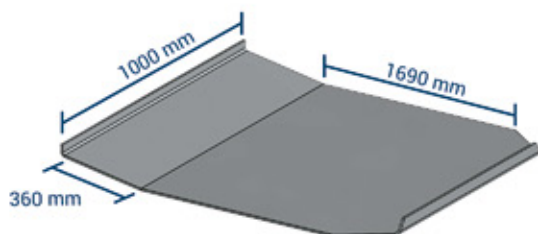
**CR900**

MESA PINO REI  
DIANTEIRO BITREM



**CR901**

MESA PINO REI  
TRASEIRO BITREM



**CR902**

MESA PINO REI  
CARRETA

## GRADES



### CR700

#### GRADE LATERAL INFERIOR

CÓD.	ALT.	COMP.
CR700A	550 mm	2220 mm
CR700B	550 mm	2320 mm
CR700C	550 mm	2420 mm
CR700D	550 mm	2960 mm
CR700E	600 mm	2220 mm
CR700F	600 mm	2320 mm
CR700G	600 mm	2420 mm
CR700H	600 mm	2960 mm

CÓD.	ALT.	COMP.
CR700I	650 mm	2220 mm
CR700J	650 mm	2320 mm
CR700K	650 mm	2420 mm
CR700L	650 mm	2960 mm
CR700M	700 mm	2220 mm
CR700N	700 mm	2320 mm
CR700O	700 mm	2420 mm
CR700P	700 mm	2960 mm

CÓD.	ALT.	COMP.
CR700Q	800 mm	2220 mm
CR700R	800 mm	2320 mm
CR700S	800 mm	2420 mm
CR700T	800 mm	2960 mm
CR700U	1000 mm	2220 mm
CR700V	1000 mm	2320 mm
CR700W	1000 mm	2420 mm
CR700X	1000 mm	2960 mm



### CR701

#### GRADE LATERAL SUPERIOR

CÓD.	ALT.	COMP.
CR701A	550 mm	2230 mm
CR701B	550 mm	2330 mm
CR701C	550 mm	2430 mm
CR701D	550 mm	2970 mm
CR701E	600 mm	2230 mm
CR701F	600 mm	2330 mm
CR701G	600 mm	2430 mm
CR701H	600 mm	2970 mm

CÓD.	ALT.	COMP.
CR701I	650 mm	2230 mm
CR701J	650 mm	2330 mm
CR701K	650 mm	2430 mm
CR701L	650 mm	2970 mm
CR701M	700 mm	2230 mm
CR701N	700 mm	2330 mm
CR701O	700 mm	2430 mm
CR701P	700 mm	2970 mm

CÓD.	ALT.	COMP.
CR701Q	800 mm	2230 mm
CR701R	800 mm	2330 mm
CR701S	800 mm	2430 mm
CR701T	800 mm	2970 mm
CR701U	1000 mm	2230 mm
CR701V	1000 mm	2330 mm
CR701W	1000 mm	2430 mm
CR701X	1000 mm	2970 mm

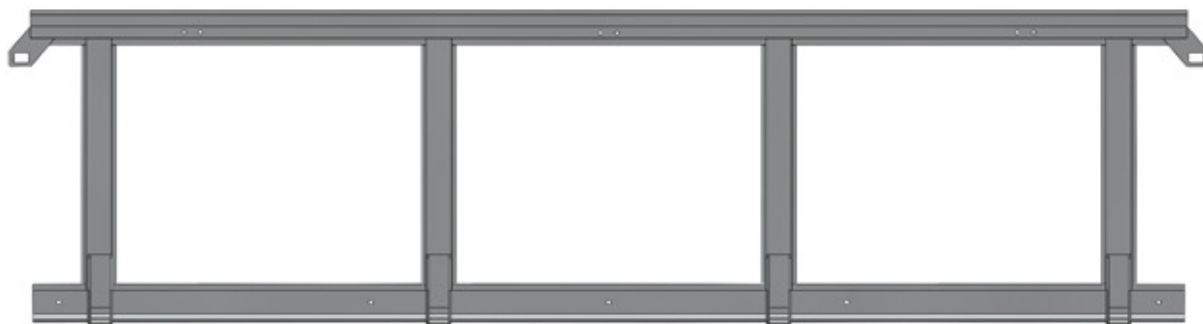
## GRADES



### CR702

#### GRADE TOMBADOR INFERIOR

CÓD.	ALT.	COMP.	CÓD.	ALT.	COMP.
CR702A	550 mm	2420 mm	CR702D	700 mm	2420 mm
CR702B	600 mm	2420 mm	CR702E	800 mm	2420 mm
CR702C	650 mm	2420 mm	CR702F	1000 mm	2420 mm



### CR703

#### GRADE TOMBADOR SUPERIOR

CÓD.	ALT.	COMP.	CÓD.	ALT.	COMP.
CR703A	550 mm	2430 mm	CR703D	700 mm	2430 mm
CR703B	600 mm	2430 mm	CR703E	800 mm	2430 mm
CR703C	650 mm	2430 mm	CR703F	1000 mm	2430 mm

## FIXADORES

---



**CR800**

FIXADOR CONJUNTO  
MECÂNICO MODERNO  
265 mm



**CR801**

FIXADOR CONJUNTO  
MECÂNICO ANTIGO  
330 mm

## SUPORTES

---

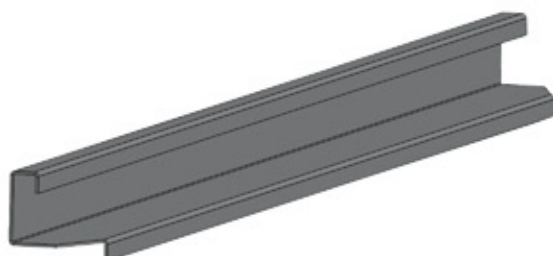


**CR100**

SUPORTE PARA-LAMA

## PARA-CHOQUES

---



**CR225**

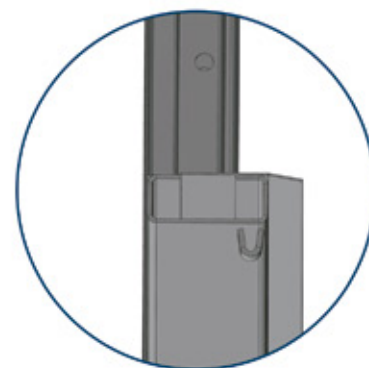
PARA-CHOQUE 4 DOBRAS

## FRONTAIS MODELO ANTIGO

### CG400

#### FRONTAL INFERIOR MODELO ANTIGO

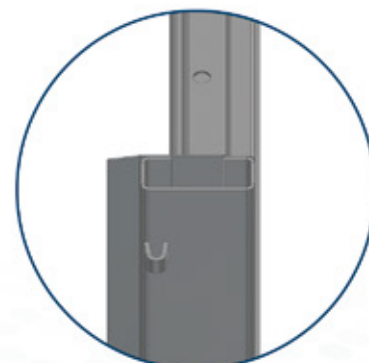
CG400A	550 mm
CG400B	600 mm
CG400C	650 mm
CG400D	700 mm
CG400E	800 mm
CG400F	1000 mm



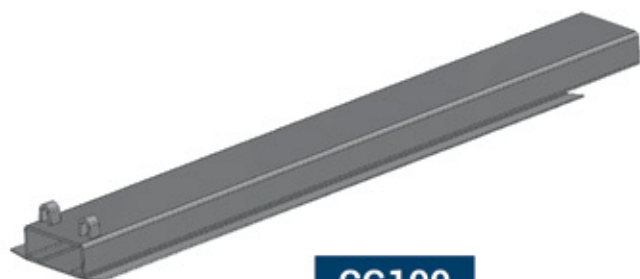
### CG401

#### FRONTAL SUPERIOR MODELO ANTIGO

CG401A	550 mm
CG401B	600 mm
CG401C	650 mm
CG401D	700 mm
CG401E	800 mm
CG401F	1000 mm



## FUEIROS MODELO ANTIGO



**CG100**

**FUEIRO LATERAL  
INFERIOR MODELO  
ANTIGO**

CG100A 550 mm  
CG100B 600 mm  
CG100C 650 mm  
CG100D 700 mm  
CG100E 800 mm  
CG100F 1000 mm



**CG101**

**FUEIRO LATERAL  
SUPERIOR MODELO  
ANTIGO**

CG101A 550 mm  
CG101B 600 mm  
CG101C 650 mm  
CG101D 700 mm  
CG101E 800 mm  
CG101F 1000 mm



**CG108**

**FUEIRO CANTO SUPERIOR  
LE MODELO ANTIGO**

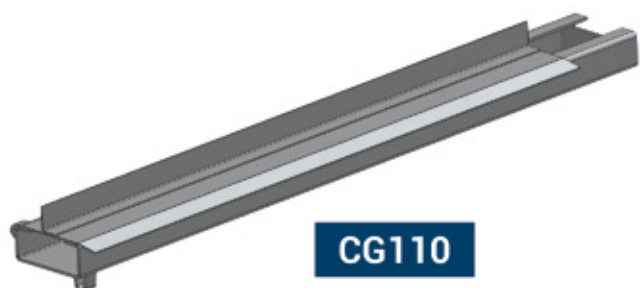
CG108A 550 mm  
CG108B 600 mm  
CG108C 650 mm  
CG108D 700 mm  
CG108E 800 mm  
CG108F 1000 mm



**CG109**

**FUEIRO CANTO SUPERIOR  
LD MODELO ANTIGO**

CG109A 550 mm  
CG109B 600 mm  
CG109C 650 mm  
CG109D 700 mm  
CG109E 800 mm  
CG109F 1000 mm



**CG110**

**FUEIRO CANTO INFERIOR  
LD MODELO ANTIGO**

CG110A 550 mm  
CG110B 600 mm  
CG110C 650 mm  
CG110D 700 mm  
CG110E 800 mm  
CG110F 1000 mm

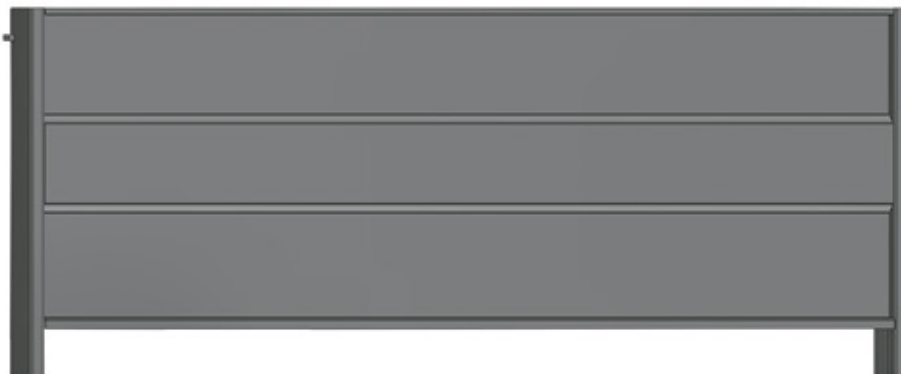


**CG111**

**FUEIRO CANTO INFERIOR  
LE MODELO ANTIGO**

CG111A 550 mm  
CG111B 600 mm  
CG111C 650 mm  
CG111D 700 mm  
CG111E 800 mm  
CG111F 1000 mm

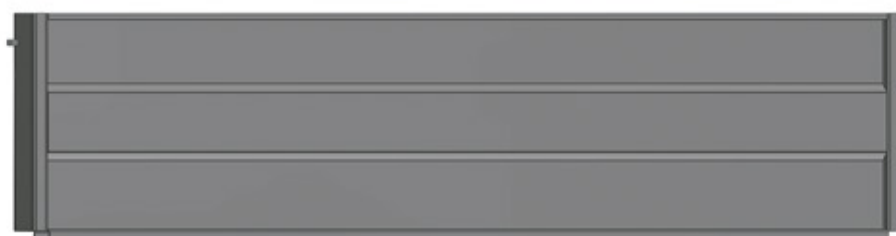
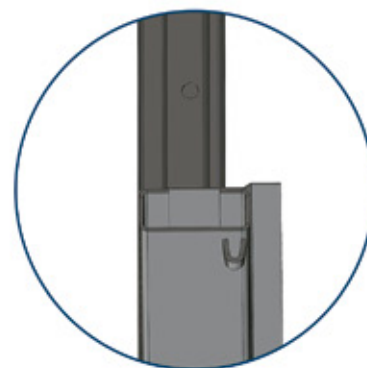
## FRONTAIS MODELO COM FRISO



### CG410

#### FRONTAL INFERIOR MODELO COM FRISO

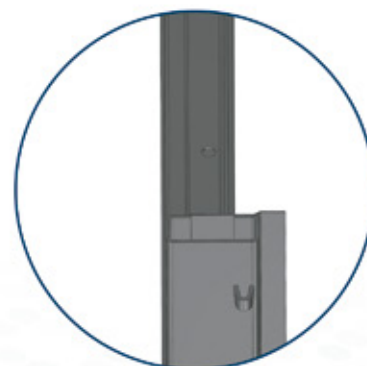
CG410A	550 mm
CG410B	600 mm
CG410C	650 mm
CG410D	700 mm
CG410E	800 mm
CG410F	1000 mm



### CG411

#### FRONTAL SUPERIOR MODELO COM FRISO

CG411A	550 mm
CG411B	600 mm
CG411C	650 mm
CG411D	700 mm
CG411E	800 mm
CG411F	1000 mm



## FUEIROS MODELO COM FRISO



**CG102**

**FUEIRO LATERAL  
INFERIOR MODELO  
COM FRISO**

CG102A 550 mm  
CG102B 600 mm  
CG102C 650 mm  
CG102D 700 mm  
CG102E 800 mm  
CG102F 1000 mm



**CG103**

**FUEIRO LATERAL  
SUPERIOR MODELO  
COM FRISO**

CG103A 550 mm  
CG103B 600 mm  
CG103C 650 mm  
CG103D 700 mm  
CG103E 800 mm  
CG103F 1000 mm



**CG112**

**FUEIRO CANTO INFERIOR  
LD MODELO COM FRISO**

CG112A 550 mm  
CG112B 600 mm  
CG112C 650 mm  
CG112D 700 mm  
CG112E 800 mm  
CG112F 1000 mm



**CG113**

**FUEIRO CANTO INFERIOR  
LE MODELO COM FRISO**

CG113A 550 mm  
CG113B 600 mm  
CG113C 650 mm  
CG113D 700 mm  
CG113E 800 mm  
CG113F 1000 mm



**CG116**

**FUEIRO CANTO SUPERIOR  
LE MODELO COM FRISO**

CG116A 550 mm  
CG116B 600 mm  
CG116C 650 mm  
CG116D 700 mm  
CG116E 800 mm  
CG116F 1000 mm



**CG117**

**FUEIRO CANTO SUPERIOR  
LD MODELO COM FRISO**

CG117A 550 mm  
CG117B 600 mm  
CG117C 650 mm  
CG117D 700 mm  
CG117E 800 mm  
CG117F 1000 mm



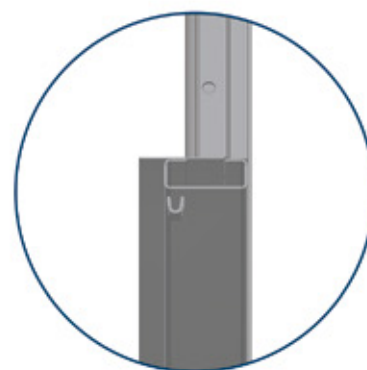
## FRONTAIS MODELO RETO



### CG420

#### FRONTAL INFERIOR MODELO RETO

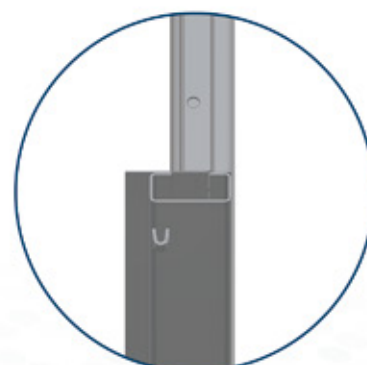
CG420A	550 mm
CG420B	600 mm
CG420C	650 mm
CG420D	700 mm
CG420E	800 mm
CG420F	1000 mm



### CG421

#### FRONTAL SUPERIOR MODELO RETO

CG421A	550 mm
CG421B	600 mm
CG421C	650 mm
CG421D	700 mm
CG421E	800 mm
CG421F	1000 mm



## FUEIROS MODELO RETO



**CG104**

**FUEIRO LATERAL  
INFERIOR MODELO RETO**

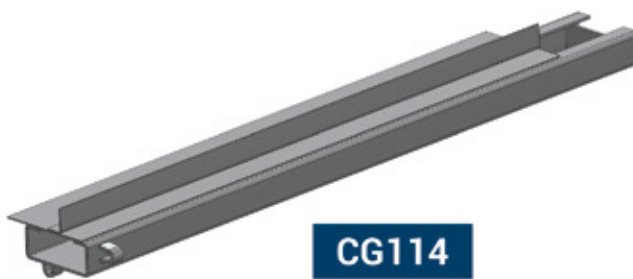
CG104A 550 mm  
CG104B 600 mm  
CG104C 650 mm  
CG104D 700 mm  
CG104E 800 mm  
CG104F 1000 mm



**CG105**

**FUEIRO LATERAL  
SUPERIOR MODELO RETO**

CG105A 550 mm  
CG105B 600 mm  
CG105C 650 mm  
CG105D 700 mm  
CG105E 800 mm  
CG105F 1000 mm



**CG114**

**FUEIRO CANTO INFERIOR  
LE MODELO RETO**

CG114A 550 mm  
CG114B 600 mm  
CG114C 650 mm  
CG114D 700 mm  
CG114E 800 mm  
CG114F 1000 mm



**CG115**

**FUEIRO CANTO INFERIOR  
LD MODELO RETO**

CG115A 550 mm  
CG115B 600 mm  
CG115C 650 mm  
CG115D 700 mm  
CG115E 800 mm  
CG115F 1000 mm



**CG118**

**FUEIRO CANTO SUPERIOR  
LE MODELO RETO**

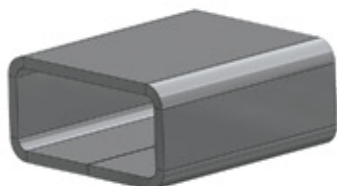
CG118A 550 mm  
CG118B 600 mm  
CG118C 650 mm  
CG118D 700 mm  
CG118E 800 mm  
CG118F 1000 mm



**CG119**

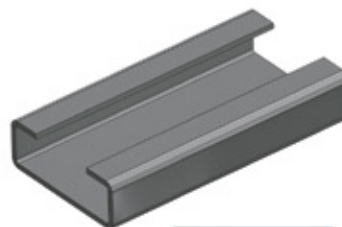
**FUEIRO CANTO SUPERIOR  
LD MODELO RETO**

CG119A 550 mm  
CG119B 600 mm  
CG119C 650 mm  
CG119D 700 mm  
CG119E 800 mm  
CG119F 1000 mm



**CG035**

CAIXA FUEIRO



**CG120**

ENCAIXE FUEIRO

## CORPO DO FUEIRO



**CG140**

CORPO DE FUEIRO

CG140A	550 mm	CG140H	800 mm
CG140B	600 mm	CG140I	820 mm
CG140C	650 mm	CG140J	920 mm
CG140D	670 mm	CG140L	1000 mm
CG140E	700 mm	CG140M	1120 mm
CG140F	720 mm	CG140N	3000 mm
CG140G	770 mm		

## TOMBADOR



**CG710**

ALAVANCA TOMBADOR

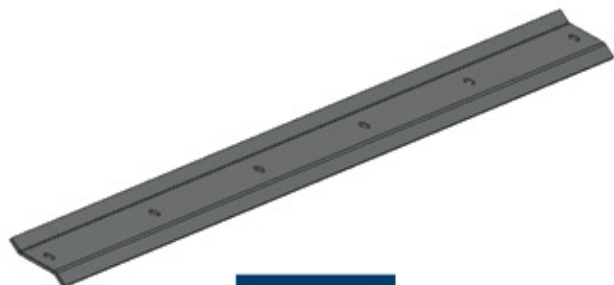


**CG720**

CONJUNTO DO  
TOMBADOR INFERIOR

## CINTA PARA-BARRO

---



**CG150**

CINTAS PARA-BARRO 695 mm

## ENGATES

---



**CG700**

ENGATE FÊMEA 2009



**CG703**

ENGATE FÊMEA TOMBADOR



**CG707**

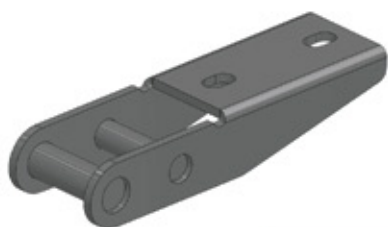
ENGATE FÊMEA INFERIOR



**CG708**

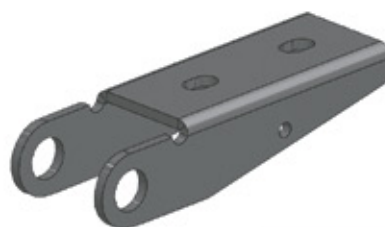
ENGATE FÊMEA 2010

## DOBRADIÇAS



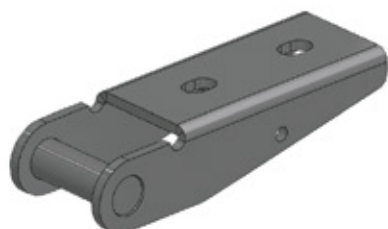
**CG060**

DOBRADIÇA MODERNA



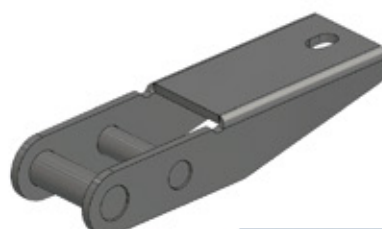
**CG061**

DOBRADIÇA TOMBADOR  
INFERIOR



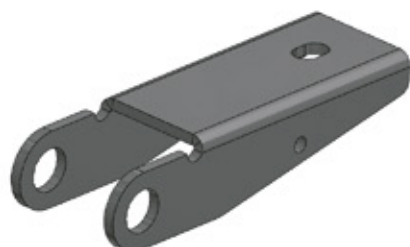
**CG062**

DOBRADIÇA TOMBADOR  
SUPERIOR



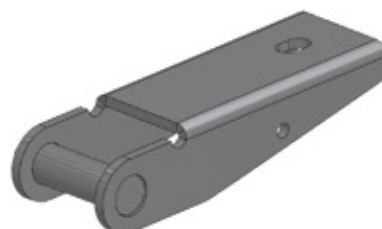
**CG070**

DOBRADIÇA TECNO 10



**CG071**

DOBRADIÇA TOMBADOR  
INFERIOR TECNO 10



**CG072**

DOBRADIÇA TOMBADOR  
SUPERIOR TECNO 10

## COLUNAS



**CG750**

**COLUNA INFERIOR  
MODELO ANTIGO**

CG750A 500 mm  
CG750B 600 mm  
CG750C 700 mm  
CG750D 800 mm  
CG750E 900 mm



**CG751**

**COLUNA SUPERIOR  
MODELO ANTIGO**

CG751A 500 mm  
CG751B 600 mm  
CG751C 700 mm  
CG751D 800 mm  
CG751E 900 mm



**CG753**

**COLUNA INFERIOR  
MONTADA MODELO  
ANTIGO**

CG753A 500 mm  
CG753B 600 mm  
CG753C 700 mm  
CG753D 800 mm  
CG753E 900 mm



**CG754**

**COLUNA SUPERIOR  
MONTADA MODELO  
ANTIGO**

CG754A 500 mm  
CG754B 600 mm  
CG754C 700 mm  
CG754D 800 mm  
CG754E 900 mm



**CG760**

**COLUNA DA GRADE**

CG760A 497 mm  
CG760B 547 mm  
CG760C 597 mm  
CG760D 697 mm  
CG760E 897 mm



**CG761**

**COLUNA DA GRADE  
MONTADA**

CG761A 497 mm  
CG761B 547 mm  
CG761C 597 mm  
CG761D 697 mm  
CG761E 897 mm

## VIGUETAS



### CG920

**VIGUETA SUPERIOR DA TAMPA INFERIOR POLIPROPILENO**

CG920A 2212 mm  
CG920B 2430 mm  
CG920C 2965 mm

### CG921

**VIGUETA SUPERIOR DA TAMPA INFERIOR POLIPROPILENO SEM FURAÇÃO**

CG921A 2212 mm  
CG921B 2430 mm  
CG921C 2965 mm



### CG930

**VIGUETA SUPERIOR DA TAMPA INFERIOR**

CG930A 2212 mm  
CG930B 2430 mm  
CG930C 2965 mm

### CG931

**VIGUETA SUPERIOR DA TAMPA INFERIOR SEM FURAÇÃO**

CG931A 2212 mm  
CG931B 2430 mm  
CG931C 2965 mm

## LÂMINA DO PARA-CHOQUE



### CG165

**LÂMINA DO PARA-CHOQUE**

## CAIXAS DE FERRAMENTAS



**CG535**

CAIXA DE FERRAMENTAS

CÓD.	ALT.	LARG.	PROFUN.
CR535	600 mm	535 mm	600 mm

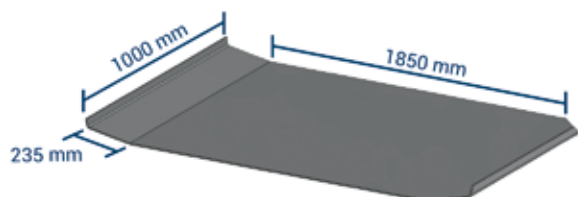


**CG536**

CAIXA DE FERRAMENTAS

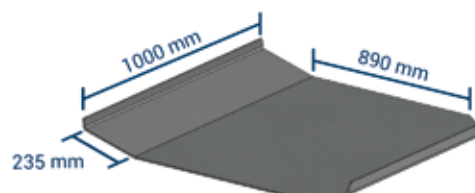
CÓD.	ALT.	LARG.	PROFUN.
CR536	600 mm	900 mm	600 mm

## MESA PINO



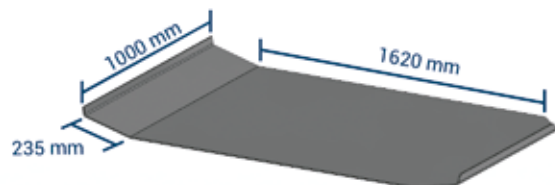
**CG600**

MESA PINO REI  
DIANTEIRO BITREM



**CG601**

MESA PINO REI  
TRASEIRO BITREM

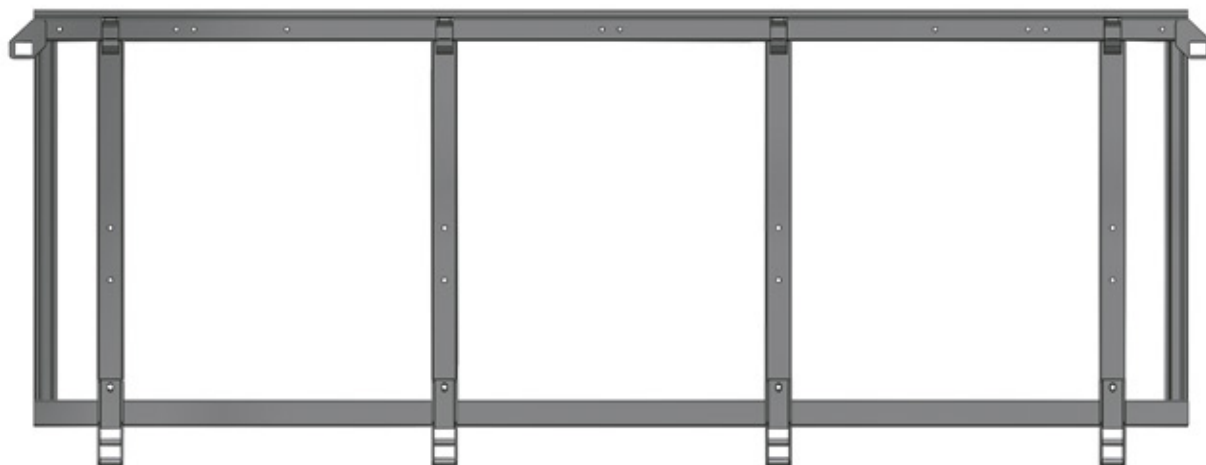


**CG603**

MESA PINO REI GUERRA



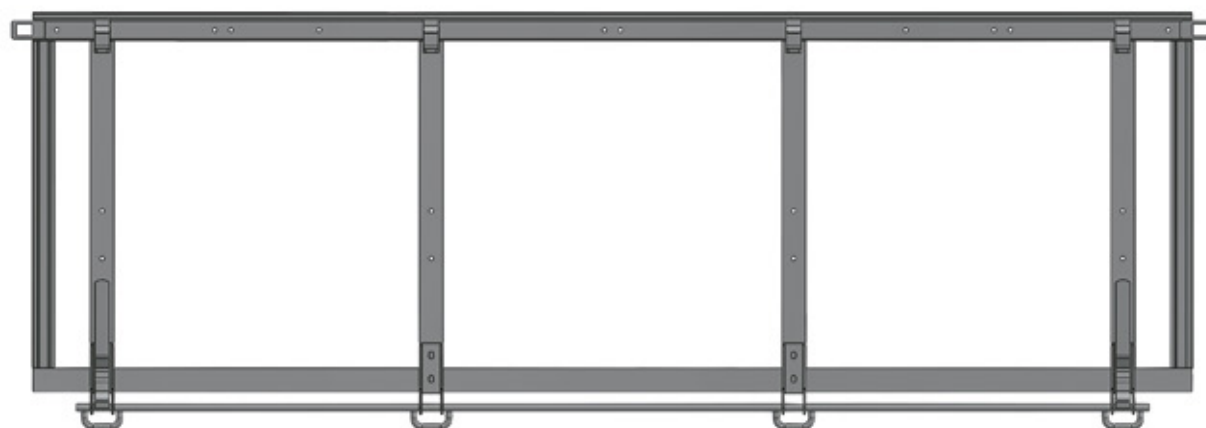
## GRADES



### CG950

#### GRADE LATERAL INFERIOR TECNO 10

CÓD.	ALT.	COMP.	CÓD.	ALT.	COMP.	CÓD.	ALT.	COMP.
CG950A	650 mm	2212 mm	CG950D	800 mm	2212 mm	CG950G	1000 mm	2212 mm
CG950B	650 mm	2430 mm	CG950E	800 mm	2430 mm	CG950H	1000 mm	2430 mm
CG950C	650 mm	2965 mm	CG950F	800 mm	2965 mm	CG950I	1000 mm	2965 mm

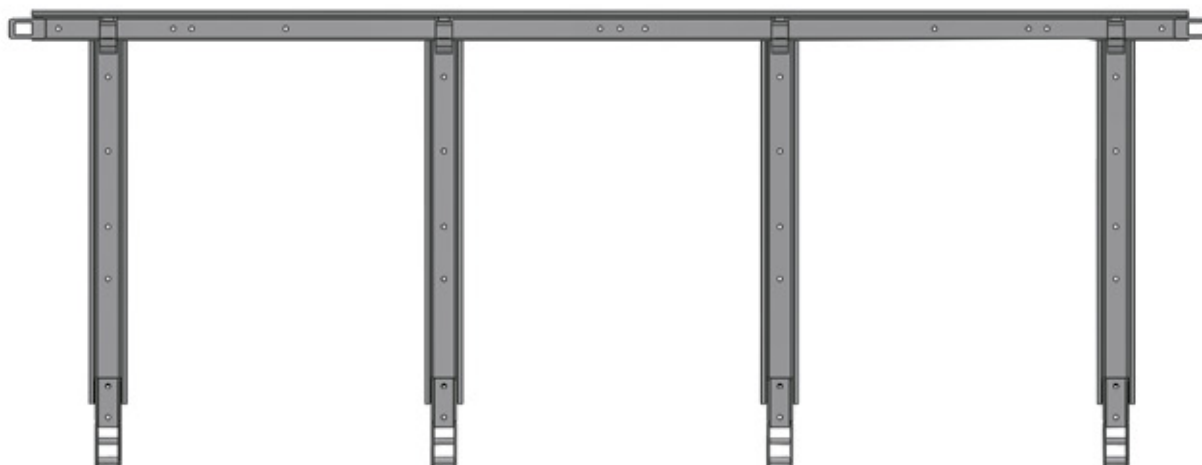


### CG953

#### GRADE DO TOMBADOR INFERIOR TECNO 10

CÓD.	ALT.	COMP.
CG953A	635 mm	2430 mm
CG953B	785 mm	2430 mm
CG953C	985 mm	2430 mm

## GRADES



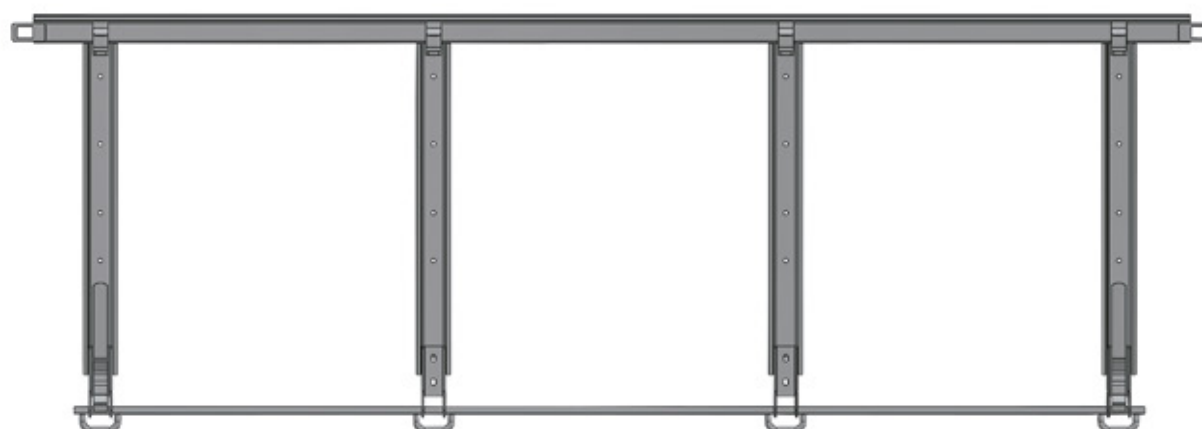
### CG940

#### GRADE LATERAL INFERIOR

CÓD.	ALT.	COMP.
CG940A	550 mm	2212 mm
CG940B	550 mm	2430 mm
CG940C	550 mm	2960 mm
CG940D	600 mm	2212 mm
CG940E	600 mm	2430 mm
CG940F	600 mm	2960 mm
CG940G	650 mm	2212 mm

CÓD.	ALT.	COMP.
CG940H	650 mm	2430 mm
CG940I	650 mm	2960 mm
CG940J	700 mm	2212 mm
CG940K	700 mm	2430 mm
CG940L	700 mm	2960 mm
CG940M	800 mm	2212 mm
CG940N	800 mm	2430 mm

CÓD.	ALT.	COMP.
CG940O	800 mm	2960 mm
CG940P	1000 mm	2212 mm
CG940Q	1000 mm	2430 mm
CG940R	1000 mm	2960 mm



### CG943

#### GRADE TOMBADOR INFERIOR

CÓD.	ALT.	COMP.
CG943A	550 mm	2430 mm
CG943B	600 mm	2430 mm
CG943C	650 mm	2430 mm

CÓD.	ALT.	COMP.
CG943D	700 mm	2430 mm
CG943E	800 mm	2430 mm
CG943F	1000 mm	2430 mm

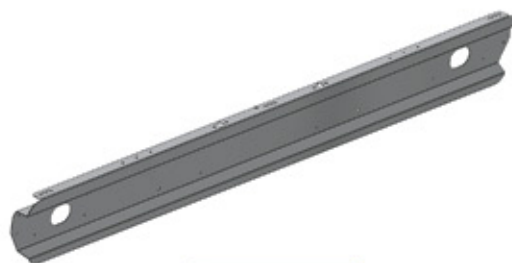
## SUPORTES



**CG800**

**SUPORTE DO PARA-LAMA**

CG800B Modelo Econômico



**CG850**

**SUPORTE DA SINALEIRA**

2500 mm



**CG161**

**SUPORTE DA SINALEIRA**



**CG160**

**SUPORTE DA PLACA  
MONTADA**

CG160A 810 mm

CG160B 830 mm

CG160C 860 mm



**CG162**

**SUPORTE CENTRAL  
DA PLACA**

CG162A 810 mm

CG162B 830 mm

CG162C 860 mm



**CG163**

**SUPORTE DA PLACA**

## FUEIROS MODELO ANTIGO



**CN100**

**FUEIRO LATERAL  
INFERIOR MODELO  
ANTIGO**

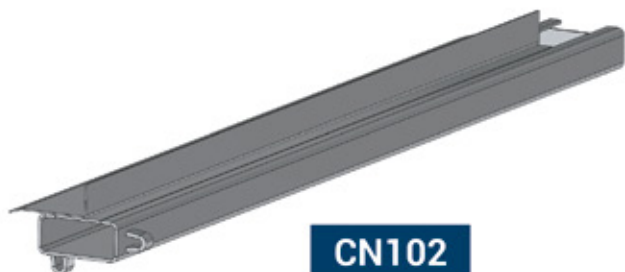
CN100A 550 mm  
CN100B 600 mm  
CN100C 650 mm  
CN100D 700 mm  
CN100E 800 mm  
CN100F 1000 mm



**CN101**

**FUEIRO LATERAL  
SUPERIOR MODELO  
ANTIGO**

CN101A 550 mm  
CN101B 600 mm  
CN101C 650 mm  
CN101D 700 mm  
CN101E 800 mm  
CN101F 1000 mm



**CN102**

**FUEIRO CANTO INFERIOR  
LE MODELO ANTIGO**

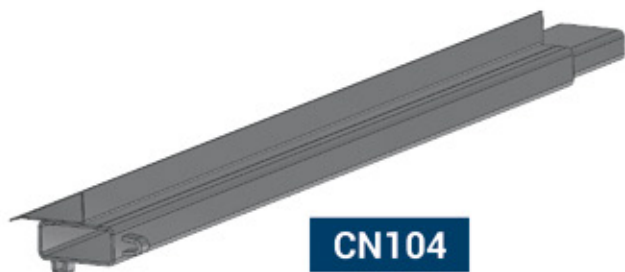
CN102A 550 mm  
CN102B 600 mm  
CN102C 650 mm  
CN102D 700 mm  
CN102E 800 mm  
CN102F 1000 mm



**CN103**

**FUEIRO CANTO INFERIOR  
LD MODELO ANTIGO**

CN103A 550 mm  
CN103B 600 mm  
CN103C 650 mm  
CN103D 700 mm  
CN103E 800 mm  
CN103F 1000 mm



**CN104**

**FUEIRO CANTO SUPERIOR  
LE MODELO ANTIGO**

CN104A 550 mm  
CN104B 600 mm  
CN104C 650 mm  
CN104D 700 mm  
CN104E 800 mm  
CN104F 1000 mm



**CN105**

**FUEIRO CANTO SUPERIOR  
LD MODELO ANTIGO**

CN105A 550 mm  
CN105B 600 mm  
CN105C 650 mm  
CN105D 700 mm  
CN105E 800 mm  
CN105F 1000 mm

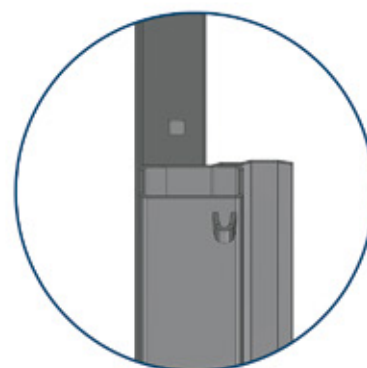
## FRONTAIS MODELO ÁQUILA



### CN310

#### FRONTAL INFERIOR MODELO ÁQUILA

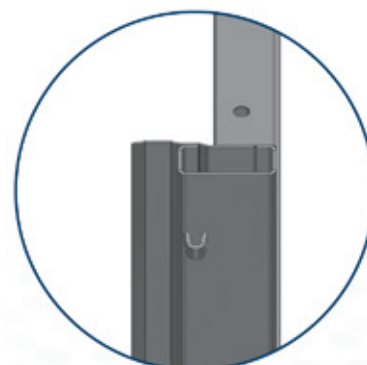
CN310A	550 mm
CN310B	600 mm
CN310C	650 mm
CN310D	700 mm
CN310E	800 mm
CN310F	1000 mm



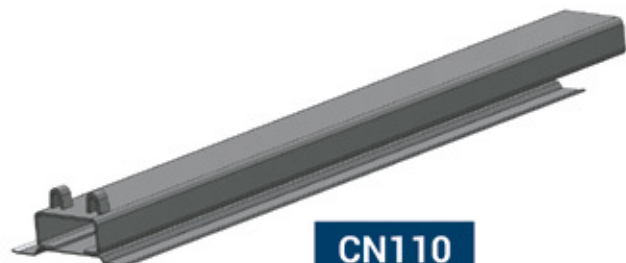
### CN311

#### FRONTAL SUPERIOR MODELO ÁQUILA

CN311A	550 mm
CN311B	600 mm
CN311C	650 mm
CN311D	700 mm
CN311E	800 mm
CN311F	1000 mm



## FUEIROS MODELO ÁQUILA



**CN110**

**FUEIRO LATERAL  
INFERIOR ÁQUILA**  
(Altura da presilha - 76 mm)

CN110A 550 mm  
CN110B 600 mm  
CN110C 650 mm  
CN110D 700 mm  
CN110E 800 mm  
CN110F 1000 mm



**CN111**

**FUEIRO LATERAL  
SUPERIOR ÁQUILA**  
(Altura da presilha - 86 mm)

CN111A 550 mm  
CN111B 600 mm  
CN111C 650 mm  
CN111D 700 mm  
CN111E 800 mm  
CN111F 1000 mm



**CN112**

**FUEIRO CANTO INFERIOR  
LE MODELO ÁQUILA**  
(Altura da presilha - 76 mm)

CN112A 550 mm  
CN112B 600 mm  
CN112C 650 mm  
CN112D 700 mm  
CN112E 800 mm  
CN112F 1000 mm



**CN113**

**FUEIRO CANTO INFERIOR  
LD MODELO ÁQUILA**  
(Altura da presilha - 76 mm)

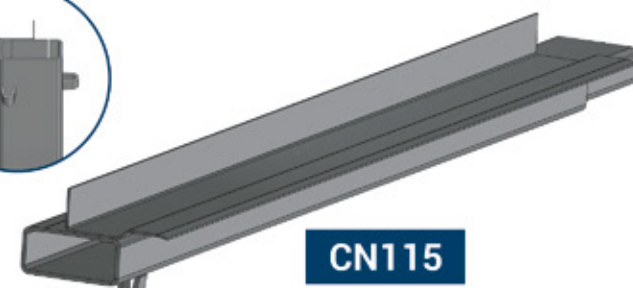
CN113A 550 mm  
CN113B 600 mm  
CN113C 650 mm  
CN113D 700 mm  
CN113E 800 mm  
CN113F 1000 mm



**CN114**

**FUEIRO CANTO SUPERIOR  
LE MODELO ÁQUILA**  
(Altura da presilha - 86 mm)

CN114A 550 mm  
CN114B 600 mm  
CN114C 650 mm  
CN114D 700 mm  
CN114E 800 mm  
CN114F 1000 mm

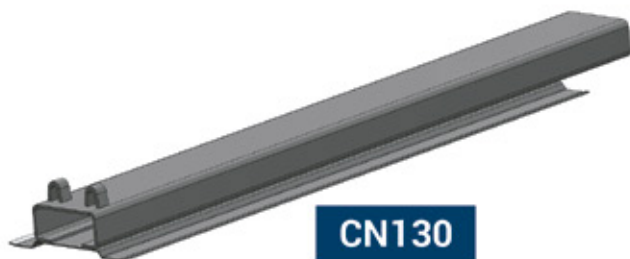


**CN115**

**FUEIRO CANTO SUPERIOR  
LD MODELO ÁQUILA**  
(Altura da presilha - 86 mm)

CR126A 550 mm  
CR126B 600 mm  
CR126C 650 mm  
CR126D 700 mm  
CR126E 800 mm  
CR126F 1000 mm

## FUEIROS MODELO FÊNIX

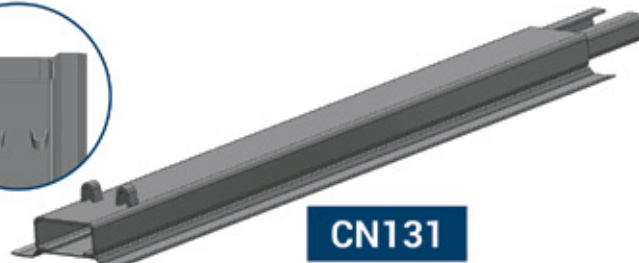


**CN130**

**FUEIRO LATERAL  
INFERIOR MODELO  
FÊNIX**

(Altura da presilha - 57 mm)

CN130A 550 mm  
CN130B 640 mm  
CN130C 790 mm  
CN130D 990 mm

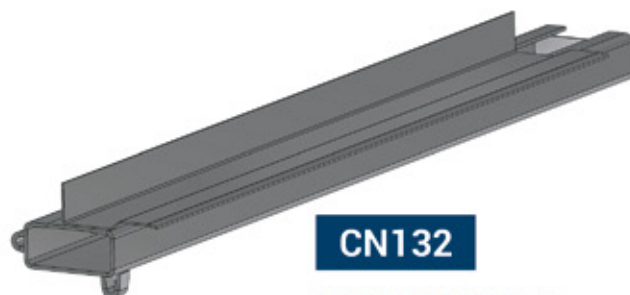


**CN131**

**FUEIRO LATERAL  
SUPERIOR MODELO  
FÊNIX**

(Altura da presilha - 57 mm)

CN131A 653 mm  
CN131B 803 mm  
CN131C 1003 mm



**CN132**

**FUEIRO DE CANTO  
INFERIOR LD MODELO  
FÊNIX**

CN132A 500 mm  
CN132B 640 mm  
CN132C 790 mm  
CN132D 990 mm



**CN133**

**FUEIRO CANTO  
INFERIOR LE MODELO  
FÊNIX**

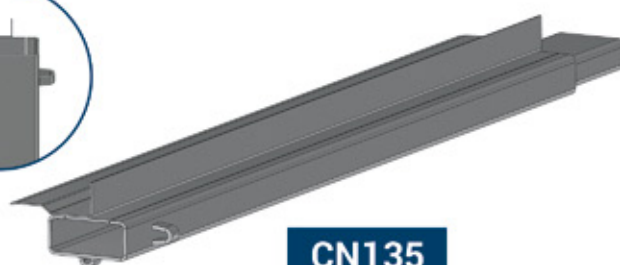
CN133A 500 mm  
CN133B 640 mm  
CN133C 790 mm  
CN133D 990 mm



**CN134**

**FUEIRO CANTO  
SUPERIOR LD MODELO  
FÊNIX**

CN134A 683 mm  
CN134B 803 mm  
CN134C 1003 mm

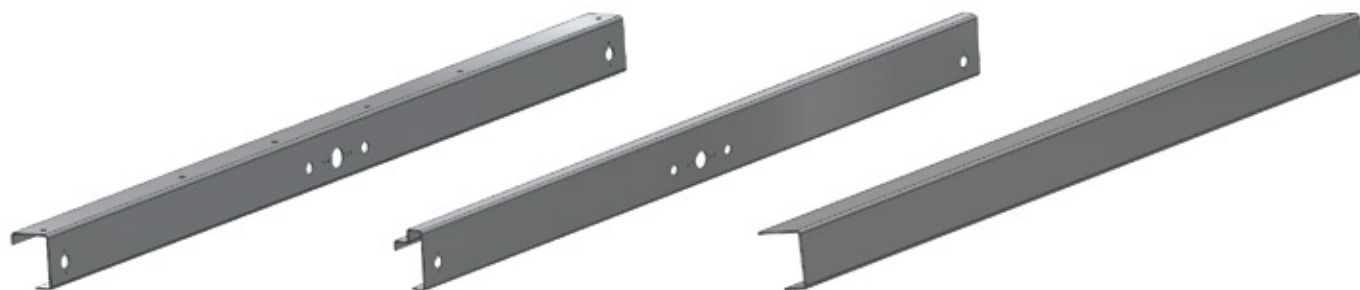


**CN135**

**FUEIRO CANTO  
SUPERIOR LE MODELO  
FÊNIX**

CN135A 683 mm  
CN135B 803 mm  
CN135C 1003 mm

## PERFIL



**CN200**

PERFIL DIANTEIRO  
ANTIGO 2446 mm

**CN201**

PERFIL DIANTEIRO  
2446 mm

**CN205**

PERFIL LATERAL  
3000 mm

## SAIA



**CN400**

SAIA MODELO ANTIGO



**CN405**

SAIA MODELO FÊNIX

## TOMBADOR



**CN046**

REFORÇO DOBRADIÇA  
TOMBADOR



**CN050**

ALAVANCA TOMBADOR



## ENGATES



**CN040**

**ENGATE FÊMEA ÁQUILA**

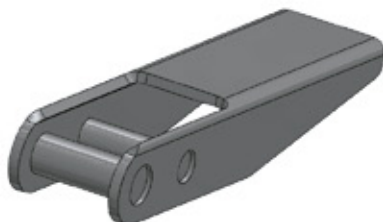
CN040 Lado Direito  
CN040A Lado Esquerdo



**CN045**

**ENGATE FÊMEA FÊNIX**

## DOBRADIÇAS



**CN025**

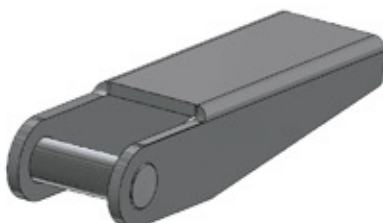
**DOBRADIÇA FÊNIX**

CN025 174 mm  
CN025A 200 mm



**CN026**

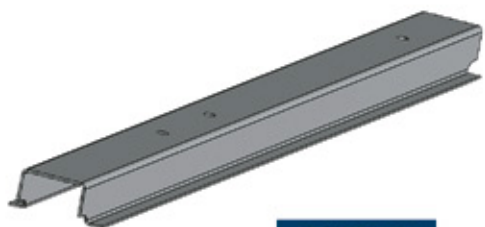
**DOBRADIÇA TOMBADOR  
INFERIOR FÊNIX**



**CN027**

**DOBRADIÇA TOMBADOR  
SUPERIOR FÊNIX 167 mm**

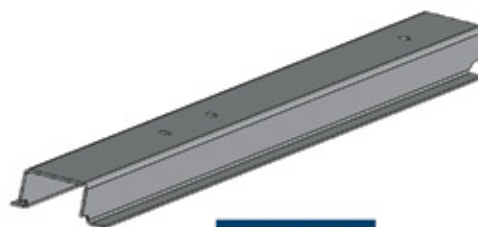
## COLUNAS



**CN090**

**COLUNA DA TAMPA  
INFERIOR ÁQUILA**

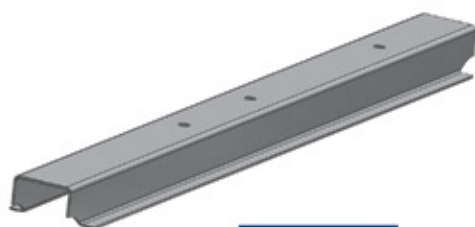
CN090A 795 mm  
CN090B 895 mm



**CN091**

**COLUNA DA TAMPA  
SUPERIOR ÁQUILA**

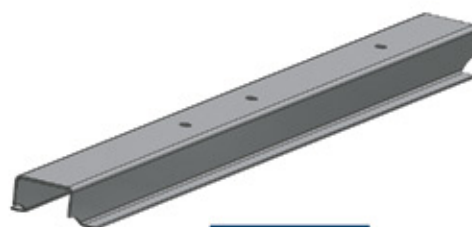
CN091A 785 mm  
CN091B 885 mm



**CN092**

**COLUNA DA TAMPA  
INFERIOR FÊNIX**

CN092A 675 mm  
CN092B 875 mm



**CN093**

**COLUNA DA TAMPA  
SUPERIOR FÊNIX**

CN093A 687 mm  
CN093B 887 mm

## VIGUETAS



**CN070**

**VIGUETA INFERIOR  
ÁQUILA FURAÇÃO  
LATERAL**

CN070A 2217 mm  
CN070B 2365 mm  
CN070C 2565 mm  
CN070D 2865 mm  
CN070E 3165 mm

**FURAÇÃO TRASEIRA**

CN080 2445 mm



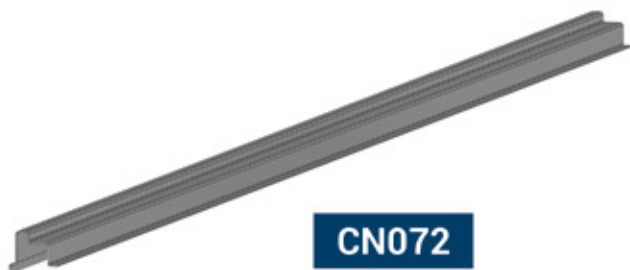
**CN071**

**VIGUETA SUPERIOR DA  
TAMPA INFERIOR ÁQUILA  
FURAÇÃO LATERAL**

CN071A 2217 mm  
CN071B 2365 mm  
CN071C 2565 mm  
CN071D 2865 mm  
CN071E 3165 mm

**FURAÇÃO TRASEIRA**

CN081 2445 mm

**VIGUETAS****CN072****VIGUETA SUPERIOR DA  
TAMPA SUPERIOR  
ÁQUILA FURAÇÃO  
LATERAL**

CN072A 2217 mm  
CN072B 2365 mm  
CN072C 2565 mm  
CN072D 2865 mm  
CN072E 3165 mm

**FURAÇÃO TRASEIRA**

CN082 2445 mm

**CN073****VIGUETA INFERIOR  
FÊNIX**

CN073A 2217 mm  
CN073B 2365 mm  
CN073C 2445 mm  
CN073D 2865 mm

**CN074****VIGUETA SUPERIOR DA  
TAMPA INFERIOR FÊNIX**

CN074A 2217 mm  
CN074B 2365 mm  
CN074C 2445 mm  
CN074D 2865 mm

**SUPORTES****CN255****SUPORTE LANTERNA**

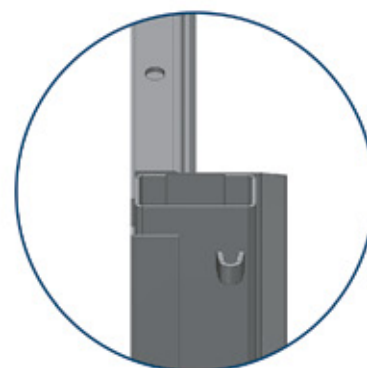
## FRONTAIS MODELO ANTIGO



### CL200

#### FRONTAL INFERIOR MODELO ANTIGO

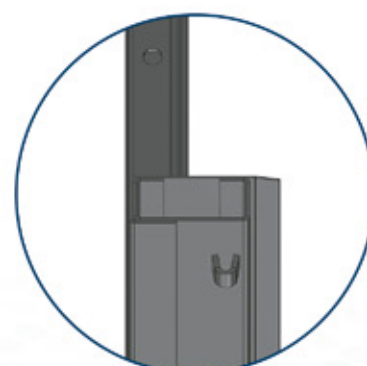
CL200A	550 mm
CL200B	800 mm
CL200C	900 mm
CL200D	1000 mm



### CL201

#### FRONTAL SUPERIOR MODELO ANTIGO

CL201A	800 mm
CL201B	900 mm
CL201C	1000 mm



## FUEIROS MODELO ANTIGO



**CL100**

**FUEIRO LATERAL  
INFERIOR MODELO  
ANTIGO**

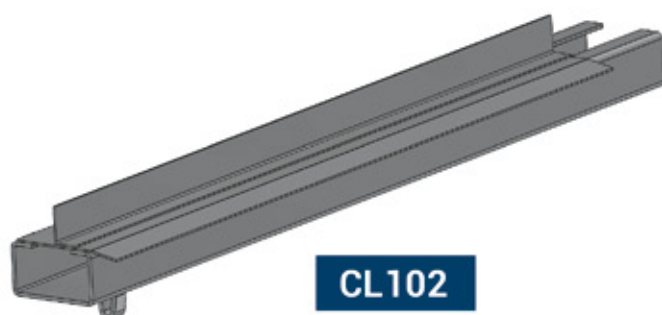
CL100A 550 mm  
CL100B 800 mm  
CL100C 900 mm  
CL100D 1000 mm



**CL101**

**FUEIRO LATERAL  
SUPERIOR MODELO  
ANTIGO**

CL101A 800 mm  
CL101B 900 mm  
CL101C 1000 mm



**CL102**

**FUEIRO CANTO INFERIOR  
LD MODELO ANTIGO**

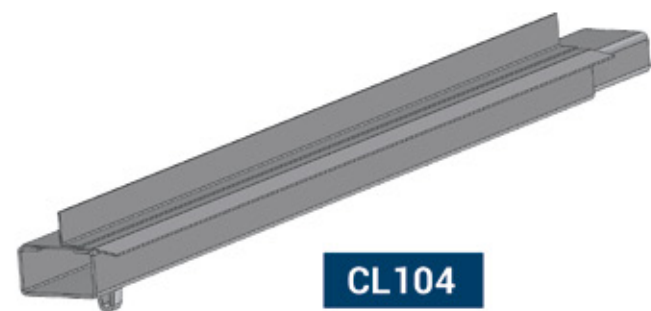
CL102A 550 mm  
CL102B 800 mm  
CL102C 900 mm  
CL102D 1000 mm



**CL103**

**FUEIRO CANTO INFERIOR  
LE MODELO ANTIGO**

CL103A 550 mm  
CL103B 800 mm  
CL103C 900 mm  
CL103D 1000 mm



**CL104**

**FUEIRO CANTO  
SUPERIOR LD MODELO  
ANTIGO**

CL104A 550 mm  
CL104B 800 mm  
CL104C 900 mm  
CL104D 1000 mm



**CL105**

**FUEIRO CANTO  
SUPERIOR LE MODELO  
ANTIGO**

CL105A 550 mm  
CL105B 800 mm  
CL105C 900 mm  
CL105D 1000 mm

## CAIXA DE FUEIRO



**CL020**

CAIXA FUEIRO

## CORPO DO FUEIRO



**CL130**

CORPO FUEIRO

CL130A	550 mm	CL130H	800 mm
CL130B	600 mm	CL130I	820 mm
CL130C	650 mm	CL130J	920 mm
CL130D	670 mm	CL130K	1000 mm
CL130E	700 mm	CL130L	1120 mm
CL130F	720 mm	CL130M	3000 mm
CL130G	770 mm		

## PERFIL



**CL150**

PERFIL DIANTEIRO  
2420 mm



**CL153**

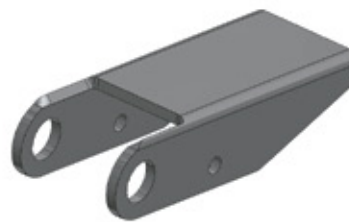
PERFIL TRASEIRO  
2420 mm

## DOBRADIÇAS



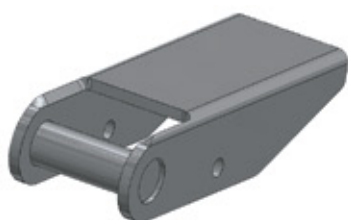
**CL050**

DOBRADIÇA



**CL051**

DOBRADIÇA TOMBADOR  
INFERIOR



**CL052**

DOBRADIÇA TOMBADOR  
SUPERIOR

## VIGUETAS



**CL500**

VIGUETA SUPERIOR DA  
TAMPA SUPERIOR

CL500A 2230 mm  
CL500B 2420 mm  
CL500C 2590 mm  
CL500D 2970 mm



**CL501**

VIGUETA SUPERIOR DA  
TAMPA INFERIOR

CL501A 2230 mm  
CL501B 2420 mm  
CL501C 2590 mm  
CL501D 2970 mm

## VIGUETAS

---



**CL502**

**VIGUETA INFERIOR DA  
TAMPA INFERIOR ECO +**

CL502A 2230 mm

CL502B 2430 mm

CL502C 2970 mm

## PROTETOR

---

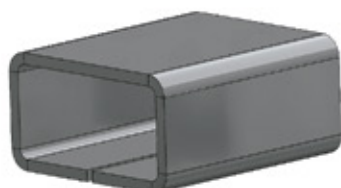


**CL0100**

**PROTETOR CICLISTA**



## CAIXAS DE FUEIRO



**CF010**

CAIXA FUEIRO 99 mm



**CF015**

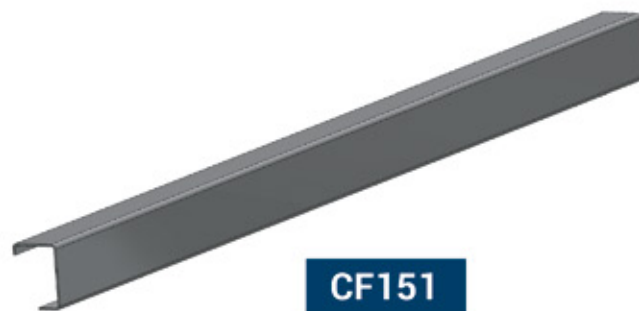
CAIXA FUEIRO LARGO  
124 mm

## PERFIL



**CF150**

PERFIL DIANTEIRO  
2435 mm



**CF151**

PERFIL LATERAL  
3000 mm

## ENGATES



**CF070**

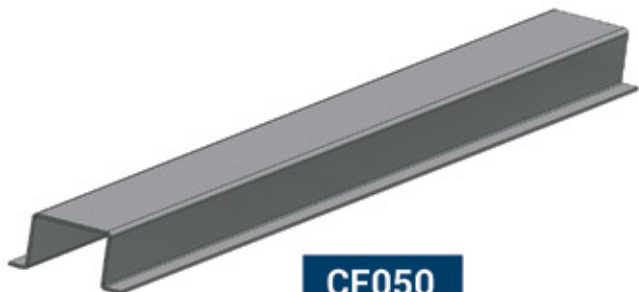
ENGATE FÊMEA  
205 mm



**CF075**

ENGATE FÊMEA  
SUPERIOR 205 mm

## COLUNAS

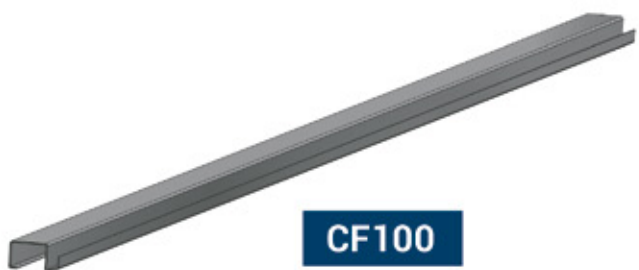


**CF050**

**COLUNA INFERIOR  
E SUPERIOR**

CF050A 590x700 mm  
CF050B 690x800 mm  
CF050C 890x1000 mm

## VIGUETAS



**CF100**

**VIGUETA INFERIOR  
TAMPA INFERIOR**



**CF105**

**VIGUETA SUPERIOR  
TAMPA INFERIOR  
2960 mm**



**CF110**

**VIGUETA SUPERIOR  
TAMPA SUPERIOR  
2960 mm**



**CD930**

ENGATE DA CORRENTE



**CD944**

ENGATE DA CORRENTE  
MODELO RANDON



**CD931**

ARGOLA



**CD932**

ENGATE S



**CD440**

ENGATE FÊMEA  
218 mm



**CD441**

ENGATE FÊMEA  
135 mm



**CD442**

ENGATE FÊMEA

CD442 3/4  
CD443 5/8



**CD444**

ENGATE MACHO  
SEM ROSCA

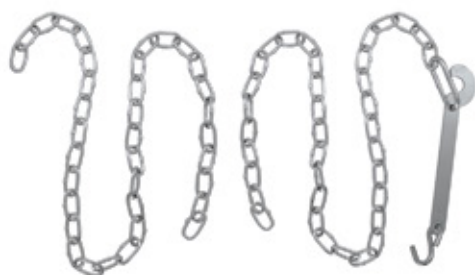
CD444 3/4  
CD445 5/8



**CD446**

ENGATE MACHO  
COM ROSCA

CD446 3/4  
CD447 5/8



**CD940**

**CONJUNTO ENGATE DA CORRENTE**



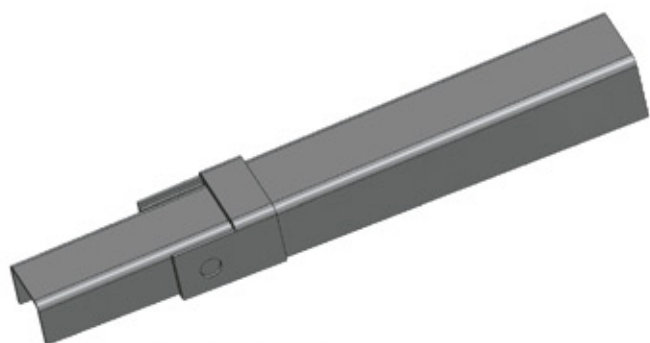
**CD940A**

**CORRENTE LISA**



**CD940B**

**CONJUNTO ENGATE DA CORRENTE SEM A PARTE LISA**



**CD860**

**COLUNA MÓVEL PARA-CHOQUE**

CD860A 450 mm  
CD860B 550 mm  
CD860C 650 mm



**CD500**

**CAIXA DE FERRAMENTAS**

CÓD.	ALT.	LARG.	PROFUN.
CD500	300 mm	500 mm	500 mm
CD501	450 mm	900 mm	600 mm
CD602	600 mm	600 mm	1100 mm



**CD100**

**SUPORTE BOTIJÃO 13KG**



**CD450**

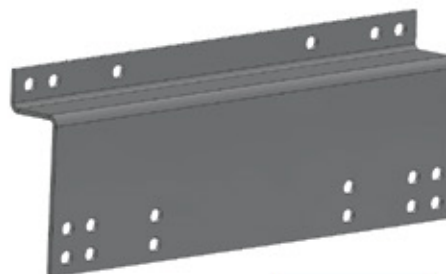
**SUPORTE LONA**

CD450A 1220 mm  
CD450B 1500 mm



**CD600**

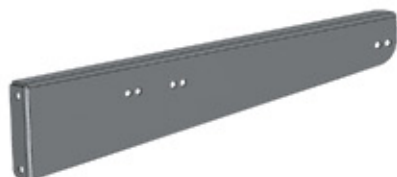
**SUPORE RETO CAIXA DE FERRAMENTAS**



**CD601**

**SUPORE CAIXA FERRAMENTAS**

CD601A 50 mm  
CD601B 93 mm  
CD601C 145 mm



**CR550**

**SUPORE CAIXA DE FERRAMENTAS**

CR550A Lado Direito  
CR550B Lado Esquerdo



**CR551A**

**REFORÇO SUPORE CAIXA DE FERRAMENTAS**

CR551A Lado Direito  
CR551B Lado Esquerdo



**CD022**

**PRESILHA FUEIRO**



**CD800**

**TERCEIRO PÉ DA CARRETA**



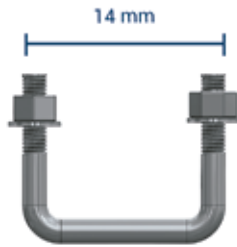
**CD050**

**ESCALADA 3 DEGRAUS**



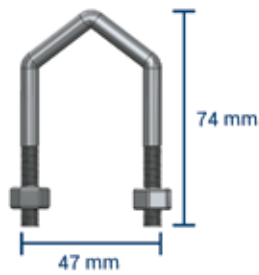
**CD051**

**ESCALADA 2 DEGRAUS**



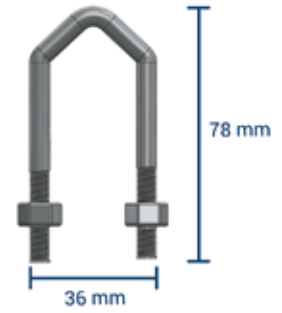
**CD900**

**GANCHO PARA CINTA**



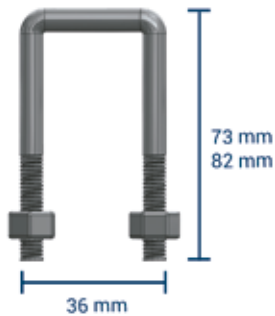
**CD920**

**PRESILHA DA TAMPA**



**CD921**

**PRESILHA DA TAMPA BITREM**



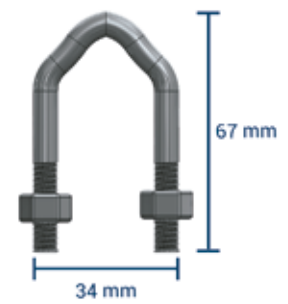
**CD922**

**PRESILHA U DA TAMPA**



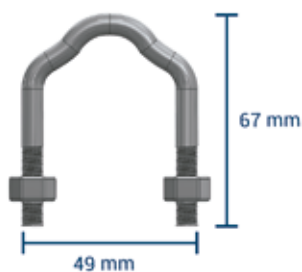
**CD923**

**PRESILHA DA CINTA**



**CD924**

**PRESILHA DA TAMPA GUERRA**



**CD925**

**PRESILHA DA TAMPA GUERRA**



**CD936A**

**PINO TAMPA 8 mm COM CORRENTE**

CD934A 6 mm  
CD935A 7 mm



**CD936**

**PINO TAMPA 8 mm**

CD934 6 mm  
CD935 7 mm



**CD950**

**CORRENTE PARA  
PINO DA TAMPA**



**CD938**

**FIXADOR TAMPA  
COM PORCA 3/4**



**CD937**

**FIXADOR TAMPA  
COM PORCA 5/8**



**CD945A**

**GRAMPO R  
130,36x6 mm**



**CD945B**

**GRAMPO R  
73,3 mm**



**CD945C**

**GRAMPO R  
50,51x2,5 mm**



**CD945D**

**GRAMPO R TOMBADOR  
135x4,5 mm**



**CD942A**

**JOANA 2,5 FIOS  
60 mm**



**CD942B**

**JOANA 3 FIOS  
90 mm**



**CD971A**

PINO QUEBRA-DEDO  
1/4 COM CORRENTE



**CD971B**

PINO QUEBRA-DEDO  
5/16 COM CORRENTE



**CD970A**

PINO QUEBRA-DEDO  
3/8x2



**CD970B**

PINO QUEBRA-DEDO  
1/4x2



**CD970C**

PINO QUEBRA-DEDO  
5/16x2



**CD972A**

PINO QUEBRA-DEDO  
1/4 COM CINTA  
PLÁSTICA



**CD972B**

PINO QUEBRA-DEDO  
5/16 COM CINTA  
PLÁSTICA



**CD973A**

PINO QUEBRA-DEDO  
1/4 COM CABO DE AÇO



**CD973B**

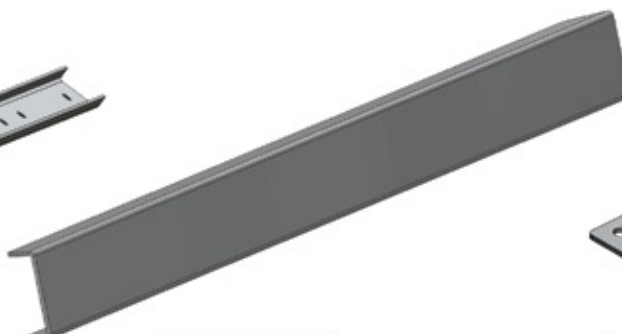
PINO QUEBRA-DEDO  
5/16 COM CABO DE AÇO





**CD120**

PERFIL U SUPORTE  
PARA-LAMA 2445 mm



**CD861**

PARA-CHOQUE

CD861 6,35 mm  
CD862 4,75 mm



**CD955A**

SUPORTE ARCO

CD955A 2 mm  
CD955B 3 mm



**CD960**

ARCO DE LONA 2380 mm



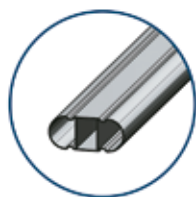
**CD961**

ARCO DE LONA 2520 mm



**CD962**

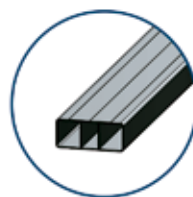
ARCO DE CONTENÇÃO 2450 mm



**CD980**

**TIRA FINO DE ALUMÍNIO  
COM CAVAS**

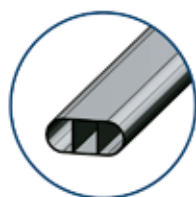
CD980A 2100 mm  
CD980B 2300 mm  
CD980C 2430 mm  
CD980D 2830 mm  
CD980E 2970 mm



**CD985**

**TIRA FINO DE ALUMÍNIO  
TRITUBULAR**

CD985A 2100 mm  
CD985B 2300 mm  
CD985C 2430 mm  
CD985D 2830 mm  
CD985E 2970 mm



**CD990**

**TIRA FINO DE ALUMÍNIO  
OBLONGO**

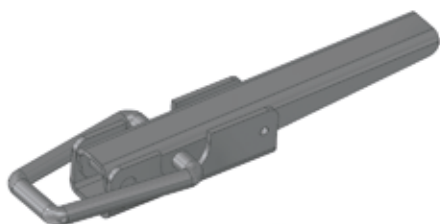
CD990A 2100 mm  
CD990B 2300 mm  
CD990C 2430 mm  
CD990D 2830 mm  
CD990E 2970 mm



**CD110**

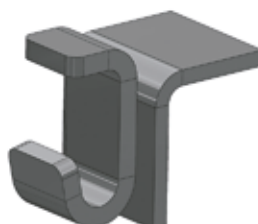
**SUPORE PARA-LAMA  
UNIVERSAL**

CD110B Modelo Econômico



**CD215**

**DOBRADIÇA  
BASCULANTE**



**CD216**

**ENGATE DOBRADIÇA  
BASCULANTE**



**CD700**

**LANTERNA  
LATERAL**



**CP008**

BOCA DE GRANELEIRA RANDON



**CP009A**

FECHAMENTO DO  
PARA-CHOQUE LD RANDON



**CP009B**

FECHAMENTO DO  
PARA-CHOQUE LE RANDON



**CP010**

TAMPA DO FUEIRO  
BITREM 7,5 m RANDON



**CP011A**

TAMPA DO FUEIRO 2006  
LD RANDON



**CP011B**

TAMPA DO FUEIRO 2006  
LE RANDON



**CP012**

TAMPA DO FUEIRO LATERAL  
2006 RANDON



**CP013A**

TAMPA DO FUEIRO  
DIANTEIRO 2006 LD  
RANDON



**CP013B**

TAMPA DO FUEIRO  
DIANTEIRO 2006 LE  
RANDON



**CP014**

TAMPA DA VIGUETA  
RANDON



**CP015**

SUPORE DA SINALEIRA  
RANDON



**CP016**

SUPORE DA PLACA  
RANDON



**CP017**

TAMPA DA VIGUETA MODELO  
NOVO RANDON



**CP001**

BOCA DE GRANELEIRA  
GUERRA



**CP002**

TAMPA DO FUEIRO  
LATERAL ANTIGO GUERRA



**CP003A**

TAMPA DO FUEIRO  
TRASEIRO/DIANTEIRO  
ANTIGO LD GUERRA



**CP003B**

TAMPA DO FUEIRO  
TRASEIRO/DIANTEIRO  
ANTIGO LE GUERRA



**CP004**

TAMPA DO  
PARA-CHOQUE GUERRA



**CP005**

TAMPA DO FUEIRO  
GUERRA



**CP006**

TAMPA DA VIGUETA  
GUERRA



**CP007**

TAMPA DA VIGUETA  
GUERRA



**CP018**

CALÇO DO TIRA FINO



**CP019**

TAMPA DO TIRA FINO  
RETANGULAR



**CP020**

TAMPA DO TIRA FINO  
OBLONGO



**CP021**

TAMPA DO TIRA FINO  
TRITUBULAR



**CP022**

TAMPA DA BORRACHA  
Ø 8 mm



**CP023**

CINTA PLÁSTICA



**CP024**

**BOCA DE GRANELEIRA  
UNIVERSAL**



**CP025**

**COROTE PRETO 25L  
CINTA PLÁSTICA /  
TORNEIRA / SABONETEIRA**



**CP026**

**COROTE PRETO 25L  
CINTA PLÁSTICA /  
TORNEIRA / TAMPA**



**CP030**

**COROTE PRETO 25L  
CINTA DE FERRO /  
TORNEIRA / TAMPA**



**CP031**

**COROTE PRETO 25L  
CINTA DE FERRO /  
TORNEIRA / SABONETEIRA**



**CP028**

**SABONETEIRA**



**CP027**


**CINTA PLÁSTICA PARA  
COROTE**



**CP029**


**CINTA DE FERRO PARA  
COROTE COM ESPASSADOR**



 (54) **3291.9189**

 (54) **98446.2740**

 [comercial@acoslata.com.br](mailto:comercial@acoslata.com.br)

 Rua Atilio Franceschini Nº 155  
Industrial São Marcos, RS